

# Lift Tables

- Hydraulic & Pneumatic
- Floor Level / Roll-On
- Heavy-Duty / High Capacity
- Tandem Wide & Long
- Extended Vertical Lift
- Portable & Powered Traverse
- Popular Options & Accessories
- Production Ready Lifts
- Custom Engineered Lift Solutions



**SOUTHWORTH®**

# Southworth... The Lift Table Experts

Southworth is the world's leading supplier of vertical movement and positioning equipment with the broadest product lines, largest inventory of stock models, most flexible range of modification, most experienced custom designers and the industry's leading innovator.

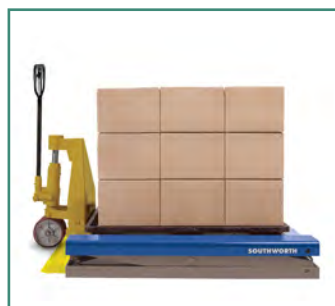
Our lift table line is the broadest in the industry. It includes:

- Standard Duty Lift Tables
- Lite Duty Lift Tables
- Portable Lift Tables
- Hand Pallet Truck Accessible Lifts
- Palletizing Lifts
- Tilting Lift Tables
- Coil and Roll Handling Lifts
- Tandem Lifts
- Extended Vertical Travel Lifts
- Extreme High Capacity Lifts

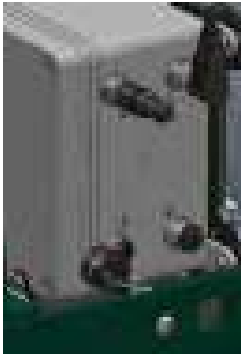


## TABLE OF CONTENTS

LS Series Backsaver Lift Tables . . . . .	4	LST Series Tandem and Wide Base Tandem Lifts . . . . .	7
Backsaver Lite Lift Tables . . . . .	4	LSH Series Spacesaver Extended Vertical Travel Lifts . . . . .	8
LS Series Plus High Capacity Lifts - 6,000 - 12,000 lbs. . . . .	5	Pneumatic Lift Tables . . . . .	9
LS Series Wide Base Lifts . . . . .	5	Palletizing Lifts (ZLS Series, LiftMat & Roll-In) . . . . .	9
LSD Series Dual Scissor Lifts . . . . .	5	Popular Options & Accessories . . . . .	10-11
DL Series Heavy Duty Lifts - up to 20,000 lbs . . . . .	6	Production Ready Lifts . . . . .	12
L-Cam Heavy Duty Lifts . . . . .	6	Custom Engineered Solutions . . . . .	12



# Quality Features For Reliability and Long Life



## M12 Controller Connections

Plug & play M12 connections on control panel for ease of replacing/adding electrical accessories.



## Lubricated-for-Life Bushings

All pivot points have hardened pins that operate in lubricated-for-life, virtually maintenance-free bushings.



## Heavy-Duty Hoses

Heavy-duty hoses with burst strength of 600% greater than the hydraulic operating pressure.



## Oversize, Low-Pressure Hydraulic Cylinders

Low operating pressure extends the life of hydraulic components. Chrome-plated piston rods are corrosion resistant, and cylinder walls are honed.



## Safety Chock

Prevents accidental lowering of table during maintenance.



## Comfort Edge Design (Optional)

No sharp corners on table top. Bright safety yellow stripe for high visibility.



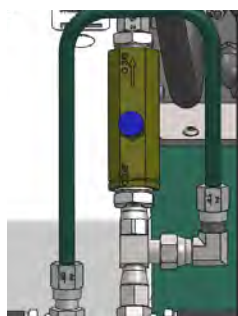
## Heavy-Duty Torque Tubes

Torque tubes minimize platform twisting and deflection for high degree of rigidity and stability.



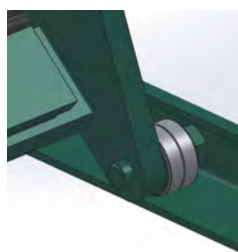
## Tell-Tale Return Hydraulic Fluid Line

Clear-plastic return line from cylinder rod bearing to tank gives visual indication of need to repack cylinder and prevents fluid spillage in the event of a bypass.



## Adjustable Flow Control

Pressure compensated flow control valve.



## Wear Indicating Rollers and Roller Retainers

Rollers are captured in the base by means of retainers to prevent accidental separation or misalignment. All oversized width tabletops also include an upper set of retainers.

Southworth Scissors Lifts are designed and manufactured to meet or exceed ANSI MH29.1 Safety Requirements for Industrial Scissors Lifts.

# Backsaver® Lifts and Backsaver Lite Lifts

## LS Series Backsaver® Lifts

Southworth Backsaver® Lifts are rugged, reliable machines for work positioning, machine feeding, assembly, order picking, pallet loading, and a wide range of other applications. They are available with capacities to 6,000 lbs and lift heights to 55'. A wide range of power, control, platform, and base configurations are available.



LS Series Backsaver Lifts

LS Series Dual Lifts

## LS Series Plus Lifts

The ideal choice when more capacity - up to 12,000 lbs. or larger platforms - up to 60"x 156" are required.

## LS Series Wide Base Lifts and LS Series Dual Scissor Lifts

For larger platforms up to 11 feet wide, choose an LS Series Wide Base Lift or an LS Series Dual Scissor Lift.



CLL Portable Lifts

LS Compact Lifts

LL Series Lite Lifts

## Backsaver Lite Lifts

Industrial-grade lift tables for applications involving lighter loads of up to 1,500 lbs. They are available in Stationary, Compact and Portable configurations.

Model No.	Capacity (Lbs.)	Vertical Travel (Inches)	Height Min / Max. (Inches)	Standard Platform (Inches)	Maximum Platform* (Inches)	Elevating Time (Seconds)	HP	Standard Voltage	Approx. Shipping Weight/Lbs. (std. platform)
<b>LL &amp; LS Series Backsaver Lite Lifts</b>									
LL05.5-26	550	26	5½ / 31½	20 x 36	36 x 60	9	½	115/1/60	300
LL1.1-26	1100	26	5½ / 31½	20 x 36	36 x 60	21	½	115/1/60	300
LL1.5-35	1500	35	6¼ / 41¼	24 x 48	36 x 60	32	½	115/1/60	450
CLL05.5-26	550	26	9 / 35	24 x 40	30 x 48	7	½	12 volt DC	400
CLL1.1-26	1100	26	9 / 35	24 x 40	30 x 48	13	½	12 volt DC	400
LS05-30	500	30	6 / 36	12 x 24	12 x 24	20	½	115/1/60	200
LS05-30W	500	30	6 / 36	16 x 24	24 x 36	20	½	115/1/60	200
LS1-30	1000	30	6 / 36	16 x 24	24 x 36	20	½	115/1/60	250
<b>LS Series Backsaver Lifts</b>									
LS2-24	2000	24	7¼ / 31¼	24 x 36	48 x 60	17	1	115/1/60	550
LS3-24	3000	24	7¼ / 31¼	24 x 36	48 x 60	22	1	115/1/60	550
LS4-24	4000	24	7¼ / 31¼	24 x 36	48 x 60	34	1	115/1/60	650
LS6-24	6000	24	7¼ / 31¼	24 x 36	48 x 60	44	1	115/1/60	600
LS2-36	2000	36	7¼ / 43¼	24 x 48	48 x 72	25	1	115/1/60	650
LS3-36	3000	36	7¼ / 43¼	24 x 48	48 x 72	33	1	115/1/60	650
LS4-36	4000	36	7¼ / 43¼	24 x 48	48 x 72	50	1	115/1/60	650
LS6-36	6000	36	7¼ / 43¼	24 x 48	48 x 72	20	3	460/3/60	850
LS2-48	2000	48	7¼ / 55¼	24 x 64	48 x 96	10	3	460/3/60	1000
LS3-48	3000	48	7¼ / 55¼	24 x 64	48 x 96	13	3	460/3/60	1000
LS4-48	4000	48	7¼ / 55¼	24 x 64	48 x 96	20	3	460/3/60	1050
LS6-48	6000	48	7¼ / 55¼	24 x 64	48 x 96	26	3	460/3/60	2000
LS2-24W	2000	24	7¼ / 31¼	36 x 36	60 x 60	28	1	115/1/60	600
LS3-24W	3000	24	7¼ / 31¼	36 x 36	60 x 60	44	1	115/1/60	650
LS4-24W	4000	24	7¼ / 31¼	36 x 36	60 x 60	28	1	115/1/60	650
LS6-24W	6000	24	7¼ / 31¼	36 x 36	60 x 60	44	1	115/1/60	700
LS2-36W	2000	36	7¼ / 43¼	36 x 48	60 x 72	50	1	115/1/60	750
LS3-36W	3000	36	7¼ / 43¼	36 x 48	60 x 72	66	1	115/1/60	800
LS4-36W	4000	36	7¼ / 43¼	36 x 48	60 x 72	50	1	115/1/60	800
LS6-36W	6000	36	7¼ / 43¼	36 x 48	60 x 72	20	3	460/3/60	850
LS2-48W	2000	48	7¼ / 55¼	48 x 64	72 x 96	20	3	460/3/60	1450
LS3-48W	3000	48	7¼ / 55¼	48 x 64	72 x 96	26	3	460/3/60	1500
LS4-48W	4000	48	7¼ / 55¼	48 x 64	72 x 96	20	3	460/3/60	1500
LS6-48W	6000	48	7¼ / 55¼	48 x 64	72 x 96	26	3	460/3/60	1500

Lifts with 3 HP three-phase power units available with 1 HP single-phase power units. Rise time increases by a multiplier of 3.3.

Model No.	Capacity (Lbs.)	Vertical Travel (Inches)	Height (Inches)		Standard Platform (Inches)	Maximum Platform* (Inches)	Elevating Time (Seconds)	HP	Standard Voltage	Approx. Shipping Weight/Lbs. (std. platform)
			Min.	Max.						
<b>LS Series Plus Lifts</b>										
LS8-36	8000	36	9	45	30 x 60	54 x 84	21	3.2	460/3/60	1350
LS10-36	10000	36	10	46	30 x 60	54 x 84	28	3.2	460/3/60	1500
LS12-36	12000	36	10	46	30 x 60	54 x 84	28	3.2	460/3/60	1500
LS3-42	3000	42	6½	48½	24 x 56	48 x 84	49	1	460/3/60	750
LS5-42	5000	42	7	49	24 x 56	48 x 84	74	1	460/3/60	800
LS8-48	8000	48	9	57	24 x 66	48 x 96	30	3.2	460/3/60	1600
LS2-60	2000	60	10	70	24 x 86	48 x 120	10	3.2	460/3/60	1300
LS4-60	4000	60	10	70	24 x 86	48 x 120	20	3.2	460/3/60	1400
LS5-60	5000	60	8	68	24 x 86	48 x 120	29	3.2	460/3/60	1450
LS6-60	6000	60	10	70	24 x 86	48 x 120	30	3.2	460/3/60	1450
LS8-60	8000	60	10	70	24 x 86	48 x 120	42	3.2	460/3/60	1700
LS2-72	2000	72	10	82	30 x 102	60 x 132	19	3.2	460/3/60	2000
LS4-72	4000	72	10	82	30 x 102	60 x 132	38	3.2	460/3/60	2100
LS6-72	6000	72	12	84	30 x 102	60 x 132	41	3.2	460/3/60	2200
LS2-84	2000	84	10	94	30 x 120	60 x 156	26	3.2	460/3/60	2200
LS4-84	4000	84	10	94	30 x 120	60 x 156	52	3.2	460/3/60	2300
LS6-84	6000	84	14	98	30 x 120	60 x 156	56	3.2	460/3/60	2500
<b>LS Series Wide Base Lifts</b>										
LS8-36W	8000	36	9	45	42 x 60	66 x 84	21	3.2	460/3/60	1700
LS10-36W	10000	36	10	46	42 x 60	66 x 84	28	3.2	460/3/60	1700
LS12-36W	12000	36	10	46	42 x 60	66 x 84	28	3.2	460/3/60	1700
LS3-42W	3000	42	6½	48½	42 x 56	66 x 84	49	1	460/3/60	1200
LS5-42W	5000	42	7	49	42 x 56	66 x 84	74	1	460/3/60	1200
LS8-48W	8000	48	9	57	48 x 66	72 x 96	30	3.2	460/3/60	2000
LS2-60W	2000	60	10	70	54 x 86	84 x 120	20	3.2	460/3/60	1800
LS4-60W	4000	60	10	70	54 x 86	84 x 120	20	3.2	460/3/60	1800
LS5-60W	5000	60	8	68	54 x 86	84 x 120	29	3.2	460/3/60	1800
LS6-60W	6000	60	10	70	54 x 86	84 x 120	30	3.2	460/3/60	1800
LS8-60W	8000	60	10	70	54 x 86	84 x 120	42	3.2	460/3/60	1800
LS2-72W	2000	72	10	82	60 x 102	96 x 132	24	3.2	460/3/60	2600
LS4-72W	4000	72	10	82	60 x 102	96 x 132	38	3.2	460/3/60	2600
LS6-72W	6000	72	12	84	60 x 102	96 x 132	41	3.2	460/3/60	2600
LS2-84W	2000	84	10	94	60 x 120	96 x 156	35	3.2	460/3/60	2800
LS4-84W	4000	84	10	94	60 x 120	96 x 156	52	3.2	460/3/60	2800
LS6-84W	6000	84	14	98	60 x 120	96 x 156	56	3.2	460/3/60	2800
<b>LSD Series Dual Scissor Lifts and Wide Base Dual Scissor Lifts</b>										
LSD4-36	4000	36	7¼	43¼	48 x 48	72 x 72	50	1	115/1/60	750
LSD6-36	6000	36	7¼	43¼	48 x 48	72 x 72	50	1	115/1/60	750
LSD8-36	8000	36	7¼	43¼	48 x 48	72 x 72	100	1	115/1/60	750
LSD12-36	12000	36	7¼	43¼	48 x 48	72 x 72	40	3.0	460/3/60	750
LSD4-48	4000	48	7¼	55¼	48 x 64	72 x 96	18	3.0	460/3/60	1100
LSD6-48	6000	48	7¼	55¼	48 x 64	72 x 96	18	3.0	460/3/60	1100
LSD8-48	8000	48	7¼	55¼	48 x 64	72 x 96	36	3.0	460/3/60	1100
LSD12-48	12000	48	7¼	55¼	48 x 64	72 x 96	60	3.0	460/3/60	1100
LSD4-60	4000	60	10	70	48 x 86	72 x 120	20	3.2	460/3/60	1650
LSD8-60	8000	60	10	70	48 x 86	72 x 120	40	3.2	460/3/60	1650
LSD10-60	10000	60	8	68	48 x 86	72 x 120	58	3.2	460/3/60	1650
LSD12-60	12000	60	10	70	48 x 86	72 x 120	60	3.2	460/3/60	1650
LSD4-36W	4000	36	7¼	43¼	72 x 48	96 x 72	100	1	115/1/60	1050
LSD6-36W	6000	36	7¼	43¼	72 x 48	96 x 72	100	1	115/1/60	1050
LSD8-36W	8000	36	7¼	43¼	72 x 48	96 x 72	100	1	115/1/60	1050
LSD12-36W	12000	36	7¼	43¼	72 x 48	96 x 72	40	3.0	460/3/60	1050
LSD4-48W	4000	48	7¼	55¼	72 x 64	120 x 96	36	3.0	460/3/60	1350
LSD6-48W	6000	48	7¼	55¼	72 x 64	120 x 96	36	3.0	460/3/60	1350
LSD8-48W	8000	48	7¼	55¼	72 x 64	120 x 96	36	3.0	460/3/60	1350
LSD12-48W	12000	48	7¼	55¼	72 x 64	120 x 96	60	3.0	460/3/60	1350
LSD4-60W	4000	60	10	70	108 x 86	132 x 120	20	3.2	460/3/60	2200
LSD8-60W	8000	60	10	70	108 x 86	132 x 120	40	3.2	460/3/60	2200
LSD10-60W	10000	60	8	68	108 x 86	132 x 120	58	3.2	460/3/60	2200
LSD12-60W	12000	60	10	70	108 x 86	132 x 120	60	3.2	460/3/60	2200

Lifts with 3.0 and 3.2 HP three-phase power units available with 1 HP single-phase power units. Rise time increases by a multiplier of 3.3.

# Heavy-Duty DL Series Lifts, L Series Cam Lifts and

## DL Series Lifts

These heavy-duty lifts are ideal for cargo handling and lifting heavy industrial loads. Built-in hydraulic overload relief protects personnel and structures. Heavy-plate platforms with structural reinforcement minimize deflection while the wide base provides increased rigidity and stability.

## L Series CAM Lifts

Exclusive CAM design provides maximum capacities (up to 30,000 lbs.) with minimum height clearances.



DL Series Lifts



DL Series - Pit Mounted



L Series CAM Lifts

## DL Series Heavy-Duty Lifts

Model No.	Capacity (Lbs.)	Vertical Travel (Inches)	Height		Standard Platform (Inches)	Maximum Platform* (Inches)	Top Plate Thickness	Elevating Time (Seconds)	HP	Standard Voltage	Approx. Shipping Weight/Lbs. (std. platform)
			Min. (Inches)	Max. (Inches)							
DL20-36	20000	36	16	52	60 x 76	96 x 108	½	56	3.2	460/3/60	4000
DL10-48	10000	48	13¼	61¼	47 x 76	84 x 108	¾	56	3.2	460/3/60	3300
DL15-48	15000	48	14¼	62¼	60 x 76	96 x 108	½	62	3.2	460/3/60	4000
DL25-48	25000	48	16	64	60 x 76	96 x 108	½	85	3.2	460/3/60	4800
DL10-60	10000	60	16	76	60 x 102	96 x 144	¾	48	3.2	460/3/60	4800
DL12-60	12000	60	16	76	60 x 102	96 x 144	¾	52	3.2	460/3/60	5100
DL16-60	16000	60	16	76	60 x 102	96 x 144	½	72	3.2	460/3/60	5300
DL20-60	20000	60	22	82	60 x 120	96 x 144	½	86	3.2	460/3/60	6800
DL25-60	25000	60	26	86	72 x 144	108 x 180	½	105	3.2	460/3/60	10500
DL20-72	20000	72	22	94	72 x 144	108 x 180	½	112	3.2	460/3/60	9700
DL4-84	4000	84	12	96	60 x 120	96 x 156	¾	45	3.2	460/3/60	4200
DL6-84	6000	84	16	100	60 x 120	96 x 156	¾	48	3.2	460/3/60	5000
DL10-84	10000	84	16	100	60 x 120	96 x 156	¾	88	3.2	460/3/60	5800

## L Series CAM Lifts

Model No.	Capacity (Lbs.)	Vertical Travel (Inches)	Height		Standard Platform (Inches)	Maximum Platform (Inches)	Frame Size (Inches)	Elevating Time (Seconds)	HP	Standard Voltage	Approx. Shipping Weight/Lbs. (std. platform)
			Min. (Inches)	Max. (Inches)							
L8-36	8000	36	7¼	43¼	30 x 60	48 x 78	28¼ x 60	21	3.2	460/3/60	1360
L10-36	10000	36	9	45	32 x 60	54 x 78	30¼ x 60	31	3.2	460/3/60	1800
L15-36	15000	36	9¼	45¼	36 x 72	60 x 90	34¼ x 70¼	50	3.2	460/3/60	2900
L20-36	20000	36	10¼	46¼	36 x 72	60 x 90	34¼ x 70¼	50	3.2	460/3/60	3300
L30-36	30000	36	11¼	47¼	43 x 72	72 x 96	41 x 70¼	56	5.0	460/3/60	4400

# Tandem Lifts – Long and Wide Base

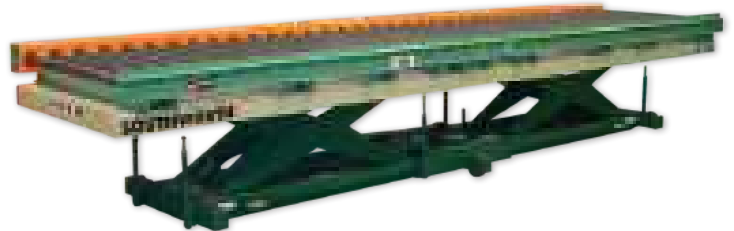
## Tandem Lifts

LST Tandem lifts provide level rise for long loads such as lumber, pipes, sheets, bar stock, and assemblies. These lifts are typically used as feeding tables for tube welders, formers, and panel saws as well as for bundling and banding bar stock, lumber, and other materials.

Tandem design allows the combination of high capacity and low collapsed height to support loads up to 7' x 17'. They are available in extra long and extra wide configurations.



LST Series Tandem - Long



LST Series Tandem - Conveyor Top

## LST Series Tandem Lifts

Model No.	Capacity (Lbs.)	Vertical Travel (Inches)	Height		Standard Platform (Inches)	Maximum Platform (Inches)	Elevating Time (Seconds)	HP	Standard Voltage	Approx. Shipping Weight/Lbs. (std. platform)
			Min. (Inches)	Max. (Inches)						
LST 4-36	4000	36	7¼	43¼	24 x 96	48 x 120	50	1	115/1/60	750
LST 6-36	6000	36	7¼	43¼	24 x 96	48 x 120	50	1	115/1/60	750
LST 8-36	8000	36	7¼	43¼	24 x 96	48 x 120	100	1	115/1/60	750
LST 12-36	12000	36	7¼	43¼	24 x 96	48 x 120	40	3.0	460/3/60	750
LST 4-48	4000	48	7¼	55¼	24 x 128	48 x 168	18	3.0	460/3/60	1100
LST 6-48	6000	48	7¼	55¼	24 x 128	48 x 168	18	3.0	460/3/60	1100
LST 8-48	8000	48	7¼	55¼	24 x 128	48 x 168	36	3.0	460/3/60	1100
LST 12-48	12000	48	7¼	55¼	24 x 128	48 x 168	60	3.0	460/3/60	1100
LST 4-60	4000	60	10	70	24 x 172	48 x 204	20	3.2	460/3/60	1650
LST 8-60	8000	60	10	70	24 x 172	48 x 204	40	3.2	460/3/60	1650
LST 10-60	10000	60	8	68	24 x 172	48 x 204	58	3.2	460/3/60	1650
LST 12-60	12000	60	10	70	24 x 172	48 x 204	60	3.2	460/3/60	1650

## LST Series Wide Base Lifts

Model No.	Capacity (Lbs.)	Vertical Travel (Inches)	Height		Standard Platform (Inches)	Maximum Platform (Inches)	Elevating Time (Seconds)	HP	Standard Voltage	Approx. Shipping Weight/Lbs. (std. platform)
			Min. (Inches)	Max. (Inches)						
LST 4-36W	4000	36	7¼	43¼	36 x 96	72 x 96	100	1	115/1/60	900
LST 6-36W	6000	36	7¼	43¼	36 x 96	72 x 96	100	1	115/1/60	900
LST 8-36W	8000	36	7¼	43¼	36 x 96	72 x 96	100	1	115/1/60	900
LST 12-36W	12000	36	7¼	43¼	36 x 96	72 x 96	40	3.0	460/3/60	900
LST 4-48W	4000	48	7¼	55¼	36 x 128	72 x 168	36	3.0	460/3/60	1350
LST 6-48W	6000	48	7¼	55¼	36 x 128	72 x 168	36	3.0	460/3/60	1350
LST 8-48W	8000	48	7¼	55¼	36 x 128	72 x 168	36	3.0	460/3/60	1350
LST 12-48W	12000	48	7¼	55¼	36 x 128	72 x 168	60	3.0	460/3/60	1350
LST 4-60W	4000	60	10	70	54 x 172	84 x 204	20	3.2	460/3/60	2200
LST 8-60W	8000	60	10	70	54 x 172	84 x 204	40	3.2	460/3/60	2200
LST 10-60W	10000	60	8	68	54 x 172	84 x 204	58	3.2	460/3/60	2200
LST 12-60W	12000	60	10	70	54 x 172	84 x 204	60	3.2	460/3/60	2200

Lifts with 3.0 and 3.2 HP three-phase power units available with 1 HP single-phase power units. Rise time increases by a multiplier of 3.3. The listings above represent Southworth's most popular tandem lift arrangements, however, practically any lift models can be tandemized end to end or side by side - Consult Factory.

# Spacesaver High Rise Lifts and Personnel Lifts

## Spacesaver Lifts

LSH Spacesaver lifts can be used as personnel work platforms, as cargo lifts, between levels as mezzanine lifts, and for positioning test apparatus or tools. These lifts are available with vertical travel up to 12 feet. Capacities range from 1,000 to 12,000 pounds.



LSH Series High Rise Lift



LSH Series Modified use as Personnel Lift

## LSH Series Spacesaver High Rise Lifts

Model No.	Capacity (Lbs.)	Vertical Travel (Inches)	Height		Standard Platform (Inches)	Maximum Platform (Inches)	Elevating Time (Seconds)	HP	Standard Voltage	Approx. Shipping Weight/Lbs. (std. platform)
			Min. (Inches)	Max. (Inches)						
LSH 1-36	1500	36	10	46	24 x 32	36 x 48	16	1.0	115/1/60	600
LSH 1-48	1000	48	9½	57½	24 x 40	36 x 54	21	1.0	115/1/60	750
LSH 2-48	2000	48	9½	57½	24 x 40	36 x 54	42	1.0	115/1/60	800
LSH 4-48	4000	48	12	60	30 x 42	48 x 60	16	3.2	460/3/60	1250
LSH 6-48	6000	48	14	62	32 x 42**	48 x 60	35	3.2	460/3/60	1300
LSH 1-60	1000	60	10½	70½	24 x 48	36 x 60	27	1.0	115/1/60	750
LSH 2-64	2500	64	12½	76½	24 x 53	42 x 66	16	3.2	460/3/60	1100
LSH 5-60	5000	60	14	74	30 x 53	48 x 66	30	3.2	460/3/60	1800
LSH 8-60	8000	60	14	74	30 x 54	48 x 66	43	3.2	460/3/60	1900
LSH 12-60	12000	60	18	78	36 x 67	60 x 84	95	3.2	460/3/60	3200
LSH 1-72	1500	72	12½	84½	20 x 53	36 x 66	58	1.0	115/1/60	900
LSH 2-72	2000	72	12¾	84¾	20 x 53	36 x 66	75	1.0	115/1/60	950
LSH 5-72	5000	72	14	86	32 x 57**	54 x 72	36	3.2	460/3/60	2000
LSH 2-84	2000	84	17	101	33 x 69	60 x 90	29	3.2	460/3/60	1900
LSH 4-84	4000	84	17	101	33 x 69	60 x 90	34	3.2	460/3/60	2200
LSH 6-84	6000	84	17	101	33 x 69	60 x 90	62	3.2	460/3/60	2350
LSH 1-96†*	1000	96	17¼	113¼	24 x 53	42 x 66	17	3.2	460/3/60	1600
LSH 3-96	3000	96	17	113	36 x 77	60 x 108	50	3.2	460/3/60	3000
LSH 5-96	5000	96	17	113	36 x 77	60 x 108	64	3.2	460/3/60	3500
LSH 10-96	10000	96	20	116	36 x 77	60 x 108	102	3.2	460/3/60	4500
LSH 2-114	2000	114	17	131	33 x 88	60 x 108	36	3.2	460/3/60	3400
LSH 5-120*	5000	120	24	144	44 x 69***	72 x 96	102	3.2	460/3/60	4800
LSH 3-128	3000	128	21	149	42 x 96	72 x 120	48	3.2	460/3/60	3400
LSH 6-128	6000	128	21	149	42 x 96	72 x 120	80	3.2	460/3/60	3500
LSH 2-144*	2000	144	24	168	42 x 77	72 x 108	68	3.2	460/3/60	4350
LSH 4-144*	4000	144	24	168	42 x 77	72 x 108	136	3.2	460/3/60	4500
LSH 5-144	5000	144	21	165	42 x 108	72 x 144	125	3.2	460/3/60	4000

† 1¼" Lateral motion

\*Three sets of legs—All others have two

\*\* Base frame width 30

\*\*\*Base frame width 42



# Pneumatic, Floor Height & Palletizing Lifts

## Pneumatic Lifts

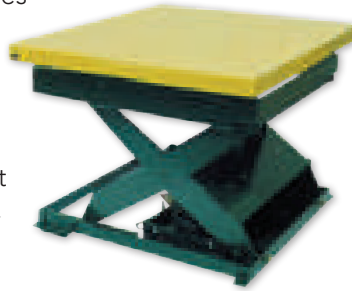
For use anywhere that shop air is available. Capacities up to 4,000 pounds. No hydraulic fluid means no risk of contaminants in the production process.

## Floor Height Lifts

These lifts lower to floor height or near floor height so that they can be fed and offloaded by hand pallet trucks. Capacities range from 2,000 to 6,000 pounds.

## Lifts for Palletizing

Southworth manufactures a wide variety of Lift Tables for use in palletizing applications including LiftMat and Roll-In Lifts. See our Pallet Handling Brochure for a complete selection.



Pneumatic Lift



ZLS Floor Height Lift



LiftMat Low-Profile Lift



LiftMat with Turntable



Roll-In Palletizing Lift

## Pneumatic Lifts

Model No.	Capacity (Lbs.)	Vertical Travel (Inches)	Low Height (Inches)	Raised Height (Inches)	Standard Platform (Inches)	Maximum Platform (Inches)	Elevating Time (Seconds)	Air (PSI) Free Air	Approx. Shipping Weight/Lbs. (std. platform)
GLSA2-24	2000	24	8	32	36 x 48	48 x 60	15 (empty)	80 psi/15 cfm	650
GLSA4-24	4000	24	8	32	48 x 48	60 x 60	15 (empty)	80 psi/15 cfm	800

## ZLS Series Floor Height Lift Tables

Model No.	Capacity (Lbs.)	Vertical Travel (Inches)	Overall Width (Inches)	Inside Width (Inches)	Platform Length (Inches)	Side Height (Inches)	Deck Thickness (Inches)	Standard Platform (Inches)	Elevating Time (Seconds)	HP	Standard Voltage	Approx. Shipping Weight/Lbs. (std. platform)
ZLS2-35	2000	35	49 - 67½	32-50	48	7¾	¾	50 x 48	45	1	115/1/60	1425
ZLS4-35	4000	35	49 - 67½	32-50	48	7¾	¾	50 x 48	48	1	115/1/60	1440
ZLS6-34	6000	34	53 - 71¾	32-50	48	8¾	½	50 x 48	63	1	115/1/60	1865

## LiftMat Series Low-Profile Lift Tables

Model No.	Capacity (Lbs.)	Vertical Travel (Inches)	Low Height (Inches)	Raised Height (Inches)	Standard Platform (Inches)	Maximum Platform (Inches)	Elevating Time (Seconds)	HP	Standard Voltage	Approx. Shipping Weight/Lbs. (std. platform)
LM2.2-31	2200	31½	3¾	34¾	24 x 60	48 x 96	20	1	115/1/60	600

## LiftMat Series Low-Profile Lift Tables with Built-in Turntable

Model No.	Capacity (Lbs.)	Vertical Travel (Inches)	Low Height (Inches)	Raised Height (Inches)	Standard Platform (Inches)	Maximum Platform (Inches)	Elevating Time (Seconds)	HP	Standard Voltage	Approx. Shipping Weight/Lbs. (std. platform)
LM2.2-31 w/Turntable	1950	31½	4¾	35¾	48 x 66	48 x 96	20	1	115/1/60	700

## Roll-In Lifts

Model No.	Capacity (Lbs.)	Vertical Travel (Inches)	Low Height (Inches)	Raised Height (Inches)	Platform Size (Inches)	Elevating Time (Seconds)	Motor (HP)	Standard Voltage	Approx. Shipping Weight/Lbs.
ROLL-E 2.2-31	2200	31½	3¾	34¾	51 x 60 ½	22	1.0	115/1/60	700
ROLL-U 2.2-31	2200	31½	3¾	34¾	51 x 60 ½	22	1.0	115/1/60	700

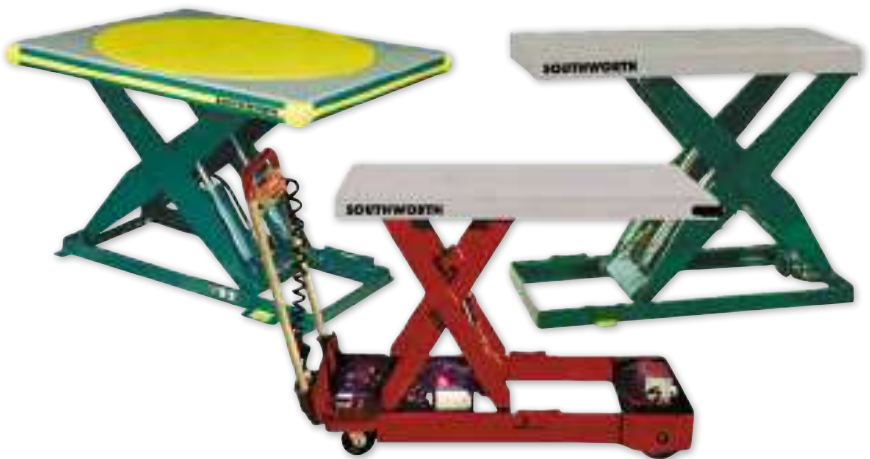
# Lift Tables Options and Accessories

## Popular Lift Table Options and Accessories

When you purchase a Southworth Lift Table, you get exactly what you want, without any compromise.

Southworth's standard line of lift tables offer well over one million different configurations that meet the vast majority of application needs. In addition, the wide range of options and accessories shown in this brochure allow you to specify tables that precisely meet your lifting and positioning needs.

Your Southworth distributor will be happy to assist you in selecting options and accessories to meet your specific application.



### One Touch/Auto Level

Raise or lower the lift a preset increment at the touch of a button. User Programmable.



### Toe Sensing Edge

Sensor automatically reverses lowering motion on contact.



### Flush Mount Turntables

Are only 3/16" higher than the surrounding platform. Turntable can rotationally locked when the lift is in the full down position.



### Wheels and Casters

For a variety of portability requirements including powered and semi-live portable to suit any environment.



### Bellows Skirting

Cover mechanism between platform and base. Protects vital lift or tilter components from damage caused by debris.



## Popular Lift Table Options for:

- Control
- Safety
- Convenience
- Portability
- Machine Protection



## Hydraulic/Actuation Options



**Larger Power Units\***  
Higher horsepower motors and hydraulics used to increase travel speed.



**Manual Hand or Foot Pump Actuation**  
Lever type hand pump or foot pedal pump for use when manual actuation or precise positioning is required.



**Minimum Downdrift Valving\***  
Near positive shut-off valving for use where platform must maintain position for extended periods of time.



**Continuous Duty Power Units\***  
Specially designed power units with motors capable of many motor starts per hour.



**Air Motor Driven Power Units**  
For use where electrical actuation is undesirable and shop air is available; meets explosion proof requirements.



**Cross Check Valving\***  
Locks oil in cylinders to eliminate deflection caused by oil transfer. Used in certain side loading applications.



**Continuous Running Power Units\***  
Heavy-duty power units with special cooling features. Power unit runs continuously, and valves are actuated to activate lift. For extreme high cycles.



**Screw Jack\***  
Lift is actuated by gear motor driven worm or ball screw. For more precise, repetitive positioning or where hydraulics are not desired.



**DC Power Units**  
Direct current power units for use with battery power.



**Power Units Full JIC Style**  
**Continuous Running Power Units\***  
Continuous running power unit built to JIC specifications.



**Double Acting Cylinders\***  
For special applications where it is necessary to provide both power up and power down.



**Hot and Cold Temperature Hydraulic Packaging**  
Special sealing and hydraulic fluids for use in hot or cold atmospheres.



**External Power Unit\***  
Power unit is connected to lift only by hydraulic hoses.



**No Coast Valving\***  
Fast acting hydraulic valving, which decreases upward coast, for use where more precise positioning is desired.



**Air Bag Actuation**  
Inflatable air bag provides limited travel lift actuation. Used where electrical power is not desirable or where only two positions are required.



**Velocity Fuse(s)/Excess Flow Protectors**  
Hydraulic control prevents table free fall in the unlikely event of massive hydraulic failure.

## Electronic Control Options



**Wall Mounted Push Button**  
Permanent wall mounted controls for use where a fixed operating station is desirable.



**Maintained Contact Controls**  
Up/down/emergency stop push button control which stops travel automatically at preset level. (Control button does not have to be held.)



**Special NEMA Rated Electrical Packages\***  
A variety of electrical packages designed to meet NEMA standards for outdoor, explosion proof, and other installation requirements.



**Electrical Travel Limit Switch(es)**  
Stops travel, provides height positioning, and can activate other equipment. Use with mechanical stop for fixed lowered height.



**Automatic Leveling Package**  
Optical sensing control positions table and stops travel at any preset height.



**Electrical Quick Disconnect**  
Quick disconnect plugs for use with portable or frequently relocated lifts.



**Visual or Audible Signals**  
Lights or bells used to warn personnel when lift is in operation.



**One-Touch Auto Leveling**  
Increase productivity in repositioning applications. Raise or lower lifts a specific increment at the touch of a button

## Mechanical Options



**Narrow Base**  
Reduced width base to fit special needs. Must be lagged for stability.



**Lifting Eyes**  
Steel eye bolts allow table to be lifted with hoist. Frequently used in pit mounted applications for ease of installation and maintenance.



**Wide Base**  
Increased width base provides extra stability for wider loads.



**Lag Plates**  
Permanently attached plates or angles with bolt holes for lagging tables to floor.



**Sub Bases**  
Extra base unit increases low height of standard designs. Provides a positive stop at predetermined down level.



**Increased Roll Over Capacity**  
Structural strengthening of table support for use in pit installations where trucks or transporters traverse the platform in its lowered position.

## Portability and Transport Options



**Semi-Live Portable**  
Wheels at one end of base and pull plate at the other, plus wheeled jack handle. Used only for moving table to a new position, not for load transport.



**Flanged Wheels**  
Steel wheels with flange for use with flat or rail track to provide unidirectional horizontal movement.



**Powered Traverse**  
Hydraulic motor drives two wheels on a single shaft via a chain and sprocket.



**Casters**  
A variety of casters, mounting arrangements, and floor locks is available for use where full portability and maneuverability are desired.



**Vee Groove Wheels**  
Steel wheels with groove for use with inverted angle or Vee track to provide unidirectional horizontal movement.



**Push Bar**  
Hand height bar to facilitate manual movement of wheeled or castered portable units.

## Platform Options



**Manual or Powered Turntables**  
Bearing mounted and supported turntables for rotating or positioning loads of work.



**Vee Cradle Platform**  
Vee shaped platform provides centering and secure handling of cylindrical loads, such as rolls.



**End-Shifting Platform**  
Manual or powered platform end-shift used to align loads with other handling systems or operating equipment.



**Gravity Conveyor Tops**  
Roller conveyor tops for integration with other handling equipment or systems.



**Tilting Tops**  
30°, 45°, and 90° tilting platforms for better positioning of certain loads.



**Fork Pockets**  
Structural fork pockets allow entire unit to be lifted and moved by fork truck.



**Ball Transfer Top**  
Fixed or retractable ball conveyors for omnidirectional movement of load on platform.



**Throw-Over Plates**  
Hinged plates used to provide a bridge between the platform surface and an adjacent fixed height surface.



**Access Plate**  
Removable or hinged plate in platform surface allows access to power unit and hydraulics when lift is in lowered position.



**Stainless Steel Platform**  
Corrosion and damage resistant surface for use with corrosive materials or where frequent wash down is required.



**Fixed and Removable Handrails with Snap Chain**  
For applications involving personnel lifting. Removable rails allow access from any side when lift is not in use.



**Bellows Accordion Skirting**  
Single-ply stitched polyester skirting covers mechanism between platform and base. Also available as boots to cover cylinders only.



**Anti-skid Platform Surfaces**  
Diamond tread platform surface or abrasive type paint provide better traction for powered vehicles and reduce danger of personnel slipping.



**Counterweighted Wheel Chock**  
Recessed in table top. Automatically engages as lift raises and prevents vehicle from rolling in set direction.



**Bevel Toeguard**  
30° bevel on platform sides provides warning contact without abrupt shear point when lift table is installed in pit.



**Toe Sensing Edge**  
Automatically reverses lift on contact with any obstruction.

## Environmental Options



**Export Boxing**  
Meets special packaging and shipping requirements for export out of the United States.



**Special Paint**  
Customer specified paint formulations and colors. Corrosion Protection similar to that of Hot Dip Galvanizing.



**Cam Follower Rollers\***  
Low friction leg rollers for increased efficiency and longer operating life.



**High Duty Cycles\***  
Special bearing packages and regreaseable pivot points for moderately high and high duty cycle applications.

\* Because of the high performance of standard tables, most asterisked options may not be required in normal usage. To avoid unnecessary cost, please consult factory before specifying these options.

## Production Ready Lifts

When lift tables are integrated into a production process, they are often subjected to more rigorous use than stand-alone lifts. In this environment, uptime is critical since taking a lift offline for unplanned maintenance means costly production interruptions.

Southworth production ready lifts are equipped with heavy duty features to ensure durability, reliability, and maximum uptime—and, with regular PM service, can extend the interval before major maintenance and replacement of renewable parts is required up to 200,000 cycles or more.

- Oversized Cylinder Rods
- High Strength Alloy Shafts and Pins
- Thicker Composite Bushings for Added Strength and Durability
- Regreasable Needle Bearing Cam Followers
- Reinforced Roller Tracks with Wear Strips Added
- Available on LS, LSH, and DL Series Lifts and Many Other Models
- Extends the Mean Time Between Repairs
- Ideal for Lifts in Areas Where Access for Maintenance is Limited



Oversized center pivot shaft, retained composite self-lubricating bushings



Soft connectivity for electrical connections



Oversized hinge pins, retained composite self-lubricating bushings



Upper limit switch



Increased cylinder rod diameter and port



Regreasable needle bearing cam followers

## Custom Engineered Solutions

From extended vertical travel lifts and oversized platforms to high-capacity machines, Southworth has the engineering expertise to design and build solutions for customized applications. We also create custom solutions with power traverse, computer integration, multi-axis positioning and much more. Whatever your lifting and positioning needs, you can rely on Southworth to provide the best possible solution.



# SOUTHWORTH®

Southworth Products Corp  
P.O. Box 1380, Portland, ME 04104-1380  
TEL: (800) 743-1000  
[www.SouthworthProducts.com](http://www.SouthworthProducts.com)  
email: [info@SouthworthProducts.com](mailto:info@SouthworthProducts.com)